

Major challenges confronting marine biogeochemical modeling

Scott C. Doney

National Center for Atmospheric Research, Boulder, Colorado

Abstract. Substantial improvements are required in the current suite of numerical models if we are to better understand the present ocean biogeochemical state and predict potential future responses to anthropogenic perturbations. At present, major impediments to marine biogeochemical modeling include the inadequate representation of multi-element cycling and community structure, large-scale physical circulation, mesoscale space and time variability, and mass exchange between the open ocean and the atmosphere, land, and coastal ocean. Marine biogeochemical modeling is inherently data driven, and significant progress on any of these topics will require close collaboration between the observational and modeling communities. Two main thrusts should be to develop improved, mechanistically based parameterizations of specific biogeochemical processes and to test the overall skill of integrated system models through detailed model-data comparison of both the mean state and seasonal to interdecadal variability.

1. Introduction

Marine biogeochemical cycles are at the heart of a series of pressing environmental issues, oceanic response to climate change [Denman *et al.*, 1996] and coastal eutrophication [Nixon, 1995] are among the most crucial, and the scientific community will increasingly be asked to produce predictive models of demonstrated skill. The current suite of numerical models is not adequate to the task. Key processes are either excluded from present models or are crudely parameterized without clear, mechanistic basis; realistic regional and global simulations are hampered by our limited understanding of the coupled interaction of ocean biology, physics, and chemistry across all relevant time and space scales. Biogeochemical modeling is inherently data driven, and the major challenge (and opportunity) for the next decade is to integrate modeling efforts with the growing body of observations and emerging conceptual paradigms from large-scale field and satellite programs such as the Joint Global Ocean Flux Study (JGOFS), Global Ocean Ecosystems Dynamics (GLOBEC), Coastal Ocean Processes (CoOP), World Ocean Circulation Experiment (WOCE), IronEx, Sea-viewing Wide Field-of-view Sensor (SeaWiFS), and the

Earth Observing System (EOS). Although oceanic biogeochemical modeling covers a diverse range of topics and scales, a number of common themes are evident and are presented below with examples drawn from the marine carbon and nitrogen cycles.

2. Models Must Better Represent Complex, Often Subtle Biological–Chemical Interactions

The current generation of biogeochemical models, typified by the *Fasham et al.* [1990] food-web model, consists of a small number (4–12) of highly aggregated compartments, where the diversity of individual organisms and species are replaced with generic variables such as “phytoplankton” or “microzooplankton.” The biomass and biological flows are formulated in terms of the concentration of an elemental currency (e.g., mol m⁻³ of nitrogen or carbon), and the relationship among different biogeochemical cycles is calculated using generally constant Redfield elemental ratios. This class of models has been used with some success to capture the seasonal cycles of bulk properties (chlorophyll, primary productivity, and nutrient fields) at a single or handful of stations (Plate 1) [Fasham, 1995; Doney *et al.*, 1996], but the generality of these models and their derived parameter values for basin and global simulations remains a serious question. Marine biota both respond to and alter their chemical environment in intricate and sometimes poorly understood ways, and the ecological

Copyright 1999 by the American Geophysical Union.

Paper number 1999GB900039.
0886-6236/99/1999GB900039\$12.00

simplicity of current models belie the complexity of the real system. At a minimum, numerical models must incorporate the major shifts in biogeochemical paradigms resulting from recent field studies.

Many key biogeochemical processes are carried out by only a limited number of planktonic species, nitrogen fixation [Capone *et al.*, 1997], calcification [Holligan *et al.*, 1993], and active vertical nutrient transport [Villareal *et al.*, 1996], which are poorly represented by bulk measures such as surface chlorophyll or total primary production. Resulting changes in the autotrophic source material and/or differential remineralization can lead to dramatic variations from the canonical Redfield ratios in the elemental composition of the dissolved, suspended, and sinking organic pools in the upper ocean [Sambrotto *et al.*, 1993]. In the subtropical Pacific, for example, elevated abundances of nitrogen fixing algae were observed in the 1990s, marking a corresponding shift from a nitrogen to a phosphorus limited ecosystem [Karl *et al.*, 1997]. Net export production may be closely linked to community structure as well, largely manifested by the seasonal or episodic disturbance often leading to the formation of diatom blooms [Bueseler, 1998], which because of their size are not as efficiently grazed by the ambient microzooplankton standing stock [Landry *et al.*, 1997]. Micronutrient iron limitation also may modulate community production and composition [Martin and Fitzwater, 1988] and has been demonstrated experimentally from the IronEx deliberate iron release studies for a portion of the high nitrate, low chlorophyll equatorial Pacific [Coale *et al.*, 1996], though a more complex interplay with silicate cannot be excluded in general [Dugdale and Wilkerson, 1998]. Dissolved organic matter (DOM) has been shown to be an important pool for seasonal carbon storage and export [Carlson *et al.*, 1994; Hansell and Carlson, 1998], and the partitioning of organic matter export between dissolved and sinking particle forms is critical for large-scale model dynamics [Najjar *et al.*, 1992]. However, the dynamic controls on the production and consumption of DOM, the so-called "microbial" loop, are poorly known from a mechanistic perspective [Azam, 1998].

The next steps forward for numerical modeling will require explicit treatment of multiple elemental cycles (C, N, P, Si, Fe) and functional diversity within the plankton community. At the system level, the simultaneous comparison of multiple elemental budgets provides a much more stringent test of model skill, and the modeling field would greatly benefit from the construction of a standardized set of validation exercises across a range of marine environments based on existing time series and regional data sets [e.g., Evans and Garcon, 1997]. Rudimentary, often incomplete community structure models also have been proposed, but as yet, no general model form has gained wide accep-

tion. Considerable debate has centered on whether it is better to predict species composition or at a minimum functional characteristics, prognostically, parameterize structural responses through more simplified allometric relationships [e.g., Armstrong, 1994], or specify fixed biogeographical regimes in space and time [Longhurst, 1995]. Improved basin- and global-scale compilations of in situ plankton size spectra [Chisholm, 1992], pigment floristics, and phytoplankton and zooplankton community composition are needed for model testing and satellite algorithm development. The resulting increases in model complexity must be grounded in a mechanistic understanding of the underlying processes, and traditional process studies will be fundamental in this regard but may not be sufficient. Greater reliance on deliberate ecosystem manipulation experiments and sustained time series over multiple climatic events (e.g., El Niño-Southern Oscillation, North Atlantic Oscillation, volcanic eruptions) are clearly indicated.

3. Biogeochemical Models are Only as Good as the Physical Circulation Framework in Which They are Set

Preliminary three-dimensional basin- and global-scale biogeochemical calculations [e.g., Sarmiento *et al.*, 1993; Six and Maier-Reimer, 1996] demonstrate that large-scale features such as the contrast between the oligotrophic subtropical and eutrophic subpolar gyres can be simulated qualitatively (Plate 2) but that more quantitative comparisons are hampered by known deficiencies in the physical ocean general circulation models. Recent comparison of four global ocean carbon models highlights dramatic differences in the effective vertical tracer transports in the Southern Ocean with implications for predictions of the future oceanic uptake of anthropogenic carbon (J. Orr, personal communication 1998; available at <http://www.ipsl.jussieu.fr/OCMIP/>). Uncertainties in the physical flow field, particularly vertical velocity [Harrison, 1996], mixing, and convection, affect a variety of biogeochemical processes (nutrient supply, boundary layer stability and mean light levels, and downward transport of semilabile dissolved organic matter) and thus obscure the validation of biogeochemical model components.

The refinement of global ocean general circulation models is an on-going process, and substantial progress will likely arise from improved treatments of surface boundary forcing and subgrid-scale physics, not simply higher resolution [McWilliams, 1996]. Biogeochemistry can contribute in this regard by providing additional, often orthogonal constraints on model performance to traditional physical measures [Gruber *et al.*, 1996]. The use of transient tracer observations (tritium, radiocar-

bon, and chlorofluorocarbons) to assess the large-scale, wind-driven, and thermohaline circulation is utilized widely now [England, 1995], and observation based, integrated carbon, oxygen, and nutrient transport calculations [Wallace, 1995; Holfort *et al.*, 1998] are becoming feasible, complementing the more standard heat and freshwater transport criteria [Keeling and Peng, 1995]. The incorporation of active biology tests new facets of the physical solutions, especially the surface boundary layer dynamics [Large *et al.*, 1994] and their interaction with the interior mesoscale field [Gent and McWilliams, 1990].

4. Mesoscale Space and Time Variability are Fundamental Aspects of the Marine Biogeochemical System

The availability of remote sensing ocean color data (Plate 3), new in situ measurement technologies, and mesoscale biogeochemical models has spurred a growing realization that mesoscale variability is not simply noise to be averaged over but rather a crucial trigger, governing the nature of pelagic ecosystems. Model calculations [McGillicuddy and Robinson, 1997], supported

by moored biogeochemical time series [Dickey *et al.*, 1998] and ship survey data, suggest that mesoscale eddies can greatly enhance the net upward flux of nitrate in oligotrophic regions by lifting nutrient rich isopycnal surfaces into the euphotic zone, contributing a significant fraction of the total new production in subtropical regions [McGillicuddy *et al.*, 1998]. Tropical instability waves [Yoder *et al.*, 1994] may play a similar function by supplying dissolved iron to the surface equatorial Pacific. In both cases, disturbance, rather than background nutrient levels per se, is the major factor controlling community structure and integrated biogeochemical fluxes.

Quantifying the large-scale effect of such variability will require much better information on the variation and cross correlations of biogeochemical stocks and rates on the mesoscale and submesoscale. Sampling limitations for subsurface distributions, in particular, emphasize the need for combined observational, remote sensing, and regional modeling programs with heavy reliance on data assimilation. From a modeling perspective, the simulation of open-ocean mesoscale biogeochemical processes is in its infancy [e.g., Oschlies and Garçon, 1998], and the computational demands of truly eddy resolving basin to global calculations are

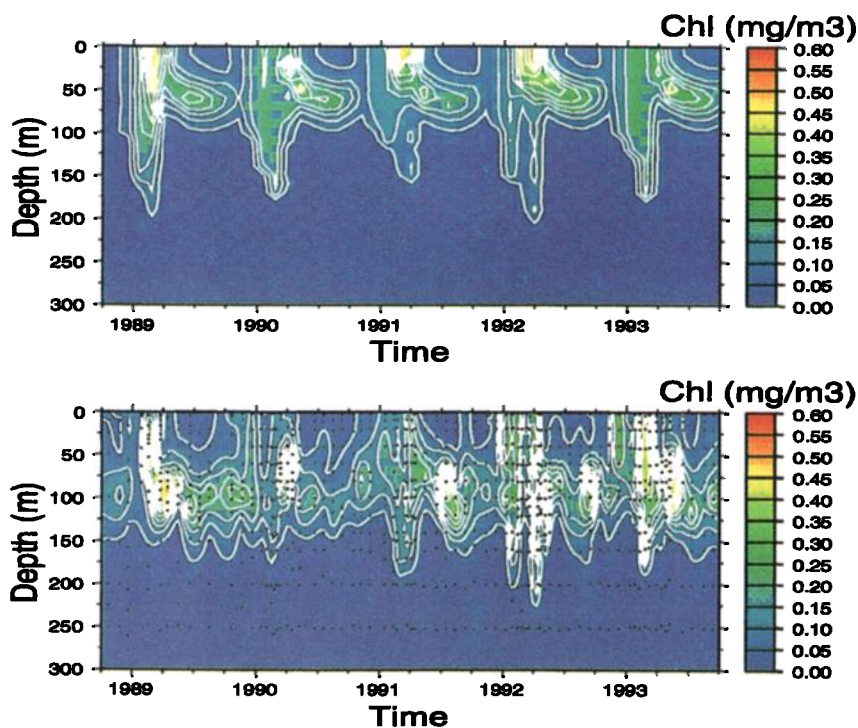


Plate 1. Comparison of multi-year, time-depth contour plots of modeled and observed chlorophyll from the Joint Global Ocean Flux Study Bermuda Atlantic Time-series Site. The model results are generated by combining one-dimensional biogeochemical [Doney *et al.*, 1996] and synoptically forced physical mixing [Doney, 1996] models. Note the significant interannual variability in both the model and observations

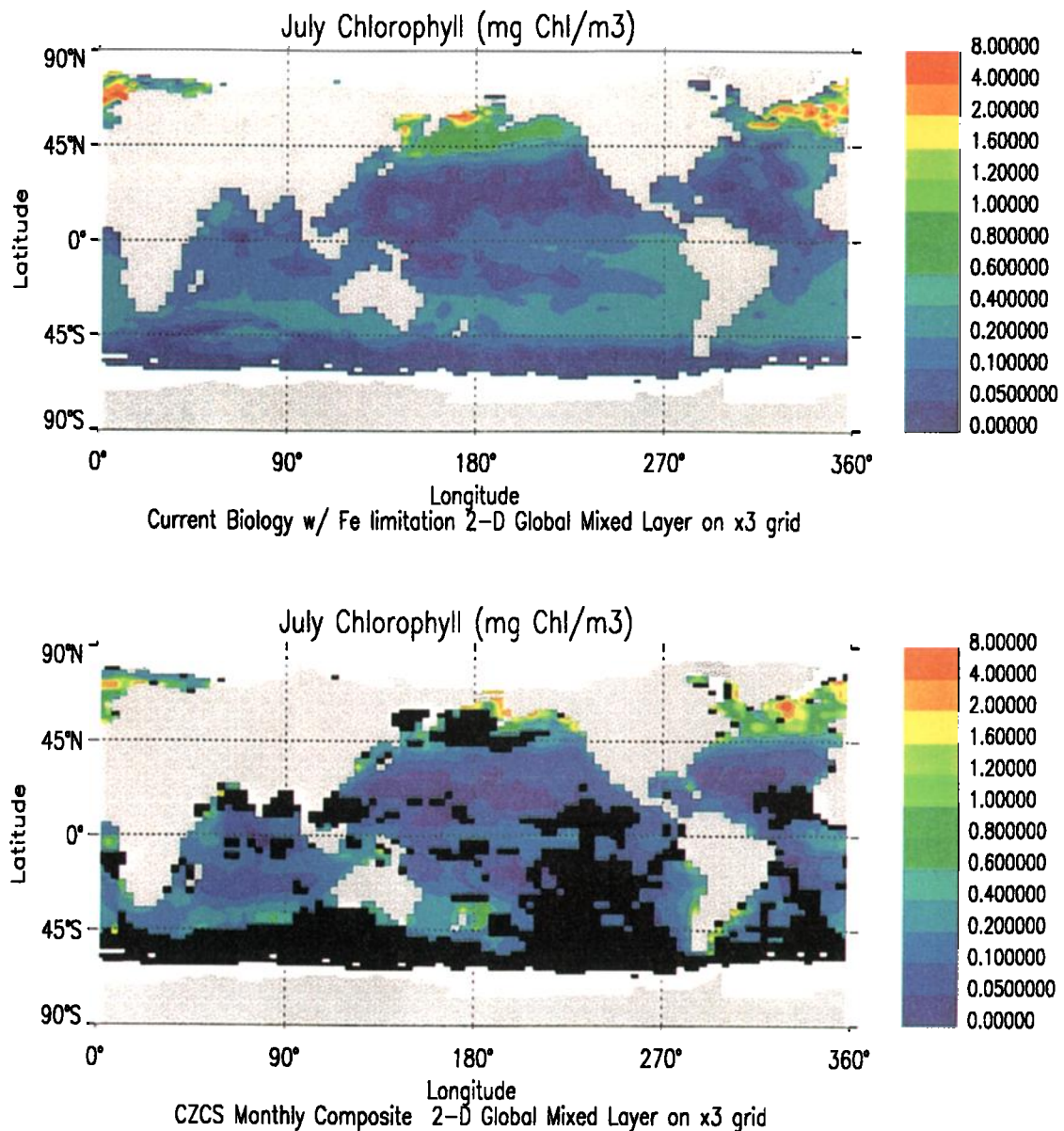


Plate 2. Comparison of observed and modeled surface ocean chlorophyll for the month of July from a global, biogeochemical mixed layer model [Glover and Doney, 1996] and the Coastal Zone Color Scanner climatology.

significant and beyond the current capabilities of all but a small number of research groups. Recent, high resolution physical simulations of the North Atlantic show that dramatic improvement in eddy statistics and western boundary current dynamics is reached only at 1/10 of a degree resolution [Smith *et al.*, 1999], and even higher resolution may be needed for some biological processes such as upwelling from eddy-eddy interactions [McGillicuddy and Robinson, 1997]. Over the near term, long time-scale equilibrium and climate simulations will be limited primarily to noneddy resolving, coarse resolution models, and a primary objective of

field studies and high-resolution process models should be the development and testing of subgrid scale biogeochemical parameterizations that can be scaled for basin and global applications.

5. Improved Constraints are Required for Interfacial Mass Fluxes Across the Air–Sea, Land–Ocean, and Coastal–Open–Ocean Boundaries

The interaction of marine biogeochemistry with the broader climate system is felt most directly through

poorly quantified surface chemical mass fluxes with the atmosphere. For example, although significant advances have been made in mapping globally the surface seawater $p\text{CO}_2$ climatology [Takahashi *et al.*, 1997], significant uncertainties remain for the air-sea CO_2 flux because of difficulties in sampling the highly variable $p\text{CO}_2$ field particularly in remote, high-latitude sites, the potential for significant regional, interannual variability [Lee *et al.*, 1998], and a near factor of 2 uncertainty in estimates of gas exchange kinetics [Wanninkhof, 1992]. Most estimates of the net oceanic uptake of anthropogenic carbon therefore have been based on numerical simulations alone (Plate 4). The situation is compounded for other climatically relevant species (e.g., organo-halides, organo-sulfides) because of limited surface concentration data and predictive modeling capability [Lee-Taylor *et al.*, 1998]. Conversely, the oceanic biogeochemical response can be forced, at least

in part, by external inputs of material, a topical example being the trace metal inputs from rivers and estuaries, aeolian deposition, and margin sediments [Duce and Tindale, 1991; Johnson *et al.*, 1997]. The air-sea flux sampling problem will become more tractable with the advent of more satellite-based approaches and autonomous chemical measurement systems [Friederich *et al.*, 1995] deployable on nontraditional platforms (e.g., moorings, drifters, and floats), and developing work on direct eddy covariance measurements may resolve many of the linger unknowns regarding gas exchange kinetics (W. McGillis, personal communication 1998; also available at <http://www.whoi.edu/air-sea/airsea.htm>). Considerable effort, however, will be required to develop the coupled ocean-atmosphere biogeochemical models required for climate studies.

Because of its limited size and proximity, the coastal

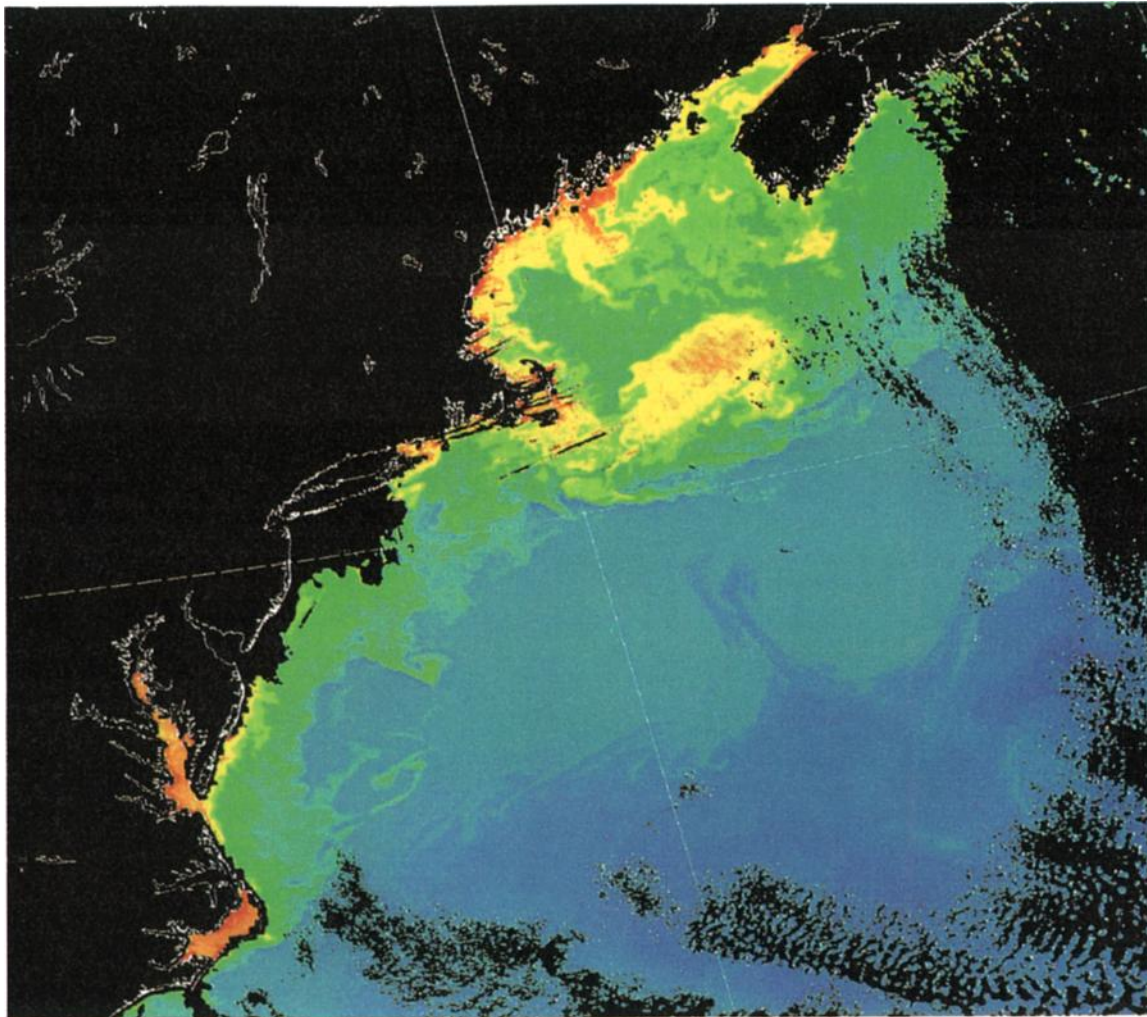


Plate 3. Satellite surface chlorophyll image of the Gulf of Maine and Mid-Atlantic Bight from the SeaWiFS instrument for October 8, 1997 (available at *SeaWiFS Project*, <http://seawifs.gsfc.nasa.gov/SEAWIFS.html>).

ocean is particularly susceptible to perturbations in terrestrial runoff and atmospheric deposition, as demonstrated by local nutrient eutrophication and the apparent rise in harmful algal blooms [Anderson, 1995; Paerl, 1997], and ecosystem shifts due to overfishing [Fogarty and Murawski, 1998]. Relative to their area, the coastal oceans also play a disproportionate role in many biogeochemical processes including nitrogen denitrification, organic carbon burial, and fisheries [Walsh, 1991; Smith and Hollibaugh, 1993; National Research Council, 1998]. Yet the regional character of most coastal studies and the historical disconnect between “blue-water” and coastal oceanography has limited the quantification of coastal/open-ocean exchange and its large-scale influence on the ocean [Falkowski et al., 1994]. Because of

their complexity and smaller scales, many global models simply neglect the continental shelves all together, an issue than can be overcome in part through more adaptable grid geometries such as unstructured (spectral) finite element grids [Haidvogel et al., 1997] or by embedding regional domain, higher-resolution models [Spall and Holland, 1991].

6. Model–Data Comparisons Must be Extended to Better Utilize the Diversity of Oceanic Measurements

The validation of present basin to global-scale numerical ecosystem models generally focuses on only a small

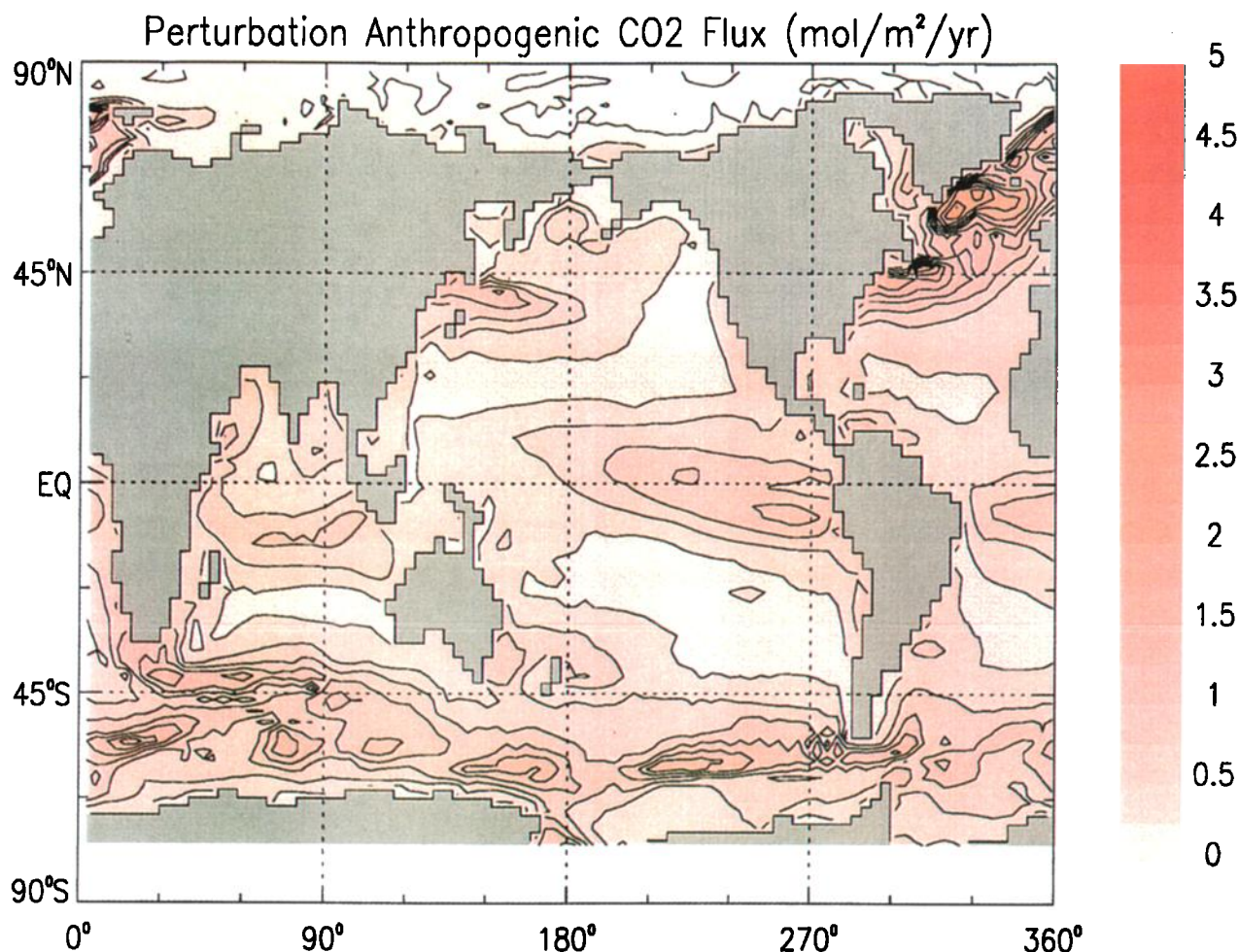


Plate 4. Annual average air-sea flux of anthropogenic CO₂ (mol C m⁻² yr⁻¹) for 1994 from a perturbation simulation of the National Center Atmospheric Research (NCAR) Climate System Model (CSM) Ocean Model (NCOM); the global integrated model uptake is 2.11 Pg C yr⁻¹ for 1994. Note that the perturbation flux of anthropogenic CO₂ differs considerably from the natural background and is largest in regions where older waters not recently in contact with the atmosphere are brought to the surface such as the equatorial upwelling bands and high latitude oceans.

subset of the wealth of available oceanic biogeochemical data, typically relying on climatologies of bulk biogeochemical concentrations, such as nutrients [Conkright *et al.*, 1994], dissolved inorganic carbon [Goyet *et al.*, 1997], satellite ocean color [McClain *et al.*, 1998], and a few rates, such as primary production [Behrenfeld and Falkowski, 1997]. The underlying processes within such models are often crudely represented at best, in part because the model predictions are not explicitly tested against observations. A clear example is the dynamics of particle sinking, remineralization, production and repackaging in the aphotic zone. Most large-scale models apply some form of empirical depth-particle flux relationship often derived from the work of Martin *et al.* [1987]. Considerable amounts of relevant but often underutilized data exist on deep-sediment trap particle fluxes [Lampitt and Anita, 1997], particulate organic carbon standing stocks [Bishop, 1999], bacterial respiration from electron transport activity [Packard *et al.*, 1988], chemical transformations of organic bio-markers in particulate and dissolved organic matter [Wakeham *et al.*, 1997], partitioning of radiocarbon [Druffel *et al.*, 1992] and natural trace metal radionuclides [Murnane *et al.*, 1994] among organic pools, and radiocarbon levels of specific organic compounds in surface sediments [Eglinton *et al.*, 1997]. In part, this reflects the need for better compilation and synthesis of field data onto scales appropriate for model-data comparison. Present simulations, however, only crudely represent reality, and straightforward matching of observed and modeled variables and parameters is often difficult. The situation should improve as models capture more of the complexity of the real system, but explicit diagnostics need to be developed for more direct comparisons.

Equally important are the emerging techniques of inverse modeling and data assimilation, which more formally compare and meld model results and data [U.S. Joint Global Ocean Flux Study (U.S. JGOFS), 1992]. Data assimilation in theory provides a solution, if it exists, that is dynamically consistent with both the observations and model equations within the estimated uncertainties. Much of the art of data assimilation lies in assigning relative error weights to different data types and to the model equations themselves, the so-called cost function problem [U.S. JGOFS, 1992]. A number of recent studies have used this approach to better constrain or optimize parameters for marine biogeochemical box and one-dimensional models, particularly with time series data [e.g., Matear, 1995; Fasham and Evans, 1995; Hurtt and Armstrong, 1996; Spitz *et al.*, 1998]. Applications to three-dimensional models are more limited but include efforts to assimilate satellite ocean color data into ecosystem models [e.g., Ishizaka, 1990] or to estimate poorly measured fluxes such as dissolved organic phosphorus transport/remineralization

[Matear and Holloway, 1995] and surface export production [Schlitzer, 1999] from the large-scale nutrient distributions and physical circulation flow fields. The utility of data assimilation will continue to grow with the import and refinement of numerical methods from meteorology and physical oceanography to interdisciplinary problems [Robinson, 1996] and with the availability of automated software systems for generating the required model adjoints [Giering and Kaminski, 1998].

Another measure for the skill of numerical models is their ability to accurately hind-cast oceanic responses to natural climate variability on timescales from the seasonal cycle to multiple decades. Large-scale modeling studies, with some exceptions, have tended to focus primarily on the mean state of the ocean as given by global climatologies such as the NODC nutrient data [Conkright *et al.*, 1994] and similar inorganic carbon products forthcoming from the JGOFS/WOCE global survey [Goyet *et al.*, 1997]. However, biological oceanographic time series exhibit significant variability on interannual to interdecadal scales associated with physical climate phenomenon such as the El Niño-Southern Oscillation (ENSO) [McGowan *et al.*, 1998]. The ecosystem response to physical forcing, however, may be quite nonlinear, manifesting in the North Pacific, for example, as an apparent major biological regime shift in the mid-1970s [Francis and Hare, 1994], with a two fold increase in subtropical chlorophyll and primary production [Venrick *et al.*, 1987; Karl, 1999]. On slightly shorter time scales, the extended ENSO signal of the mid-1990s appears to have caused an enhancement in nitrogen fixation in the North Pacific subtropics related to increased water column stability [Karl *et al.*, 1995]. The number of historical, multidecadal ocean biological time series is limited [e.g., Reid *et al.*, 1998], but their utility is almost invaluable. Despite the promise of near continuous satellite ocean color coverage for the indefinite future, subsurface, in situ measurements are key to answering questions about why observed changes occur, and such long-term oceanographic time series are not feasible without vigorous, on-going support from both the observational and modeling communities.

Although the availability of computational resources is and will certainly remain an issue in marine biogeochemical modeling, the main factors limiting progress are more fundamentally related to our conceptualization of the key processes and our ability to verify model behavior through robust and thorough model-data comparisons [Abbott, 1995]. The latter helps drive development by highlighting model deficiencies and is crucial if we are to have any confidence in the skill of our predictions on seasonal, interannual, and decadal timescales. The scientific challenges of the next decade increasingly will be accessible only through coordinated efforts joining numerical modeling, in situ and remote

observations, and data assimilation, both because of the complexity, spatial and temporal scales, and interdisciplinary nature of the problems and because of the limitations placed on field work by finite resources. Modelers and observationalist can no longer work in relative isolation, nor can the biological and chemical communities be viewed simply as consumers of the end-product of physical models. Both groups have to be involved from the beginning in the formulation and analysis of large model simulations while modeling studies must be a standard, integral component of field programs from their conception.

Acknowledgments. This paper was originally stimulated by a presentation I gave at the Ocean Modeling and Data Assimilation Workshop in May 1998 at the NSF. I want to thank Dave Schimel, Jim McWilliams, Zack Powell, Dale Haidvogel, and David Glover for their constructive comments and discussions. The SeaWiFS image in Plate 3 was provided by the SeaWiFS Project, the NASA/Goddard Space Flight Center, and ORBIMAGE. This work was supported in part by a National Science Foundation, U.S. JGOFS Synthesis and Modeling Project (SMP) grant. The National Center for Atmospheric Research is sponsored by the National Science Foundation.

References

- Abbott, M.R., Modeling the southern ocean ecosystem, *Rep. 18*, 63pp., U.S. Global Ocean Ecosystems Dyn., Berkeley, 1995.
- Anderson, D.M., Toxic red tides and harmful algal blooms: A practical challenge in coastal oceanography, *U.S. Natl. Rep. Int. Union Geod. Geophys. 1991-1994*, *Rev. Geophys.*, *29*, 1189-1200, 1995.
- Armstrong, R.A., Grazing limitation and nutrient limitation in marine ecosystems: Steady state solutions of an ecosystem model with multiple food chains, *Limnol. Oceanogr.*, *39*, 597-608, 1994.
- Azam, F., Microbial control of oceanic carbon flux: The plot thickens, *Science*, *280*, 694-696, 1998.
- Behrenfeld, M.J., and P.G. Falkowski, Photosynthetic rates derived from satellite-based chlorophyll concentrations, *Limnol. Oceanogr.*, *42*, 1-20, 1997.
- Bishop, J.K.B., Transmissometer measurement of POC, *Deep Sea Res., Part I*, *46*, 353-369, 1999.
- Buesseler, K.O., The decoupling of production and particulate export in the surface ocean, *Global Biogeochem. Cycles*, *12*, 297-310, 1998.
- Capone, D.G., J.P. Zehr, H.W. Paerl, B. Bergman, and E.J. Carpenter, Trichodesmium: A globally significant marine cyanobacterium, *Science*, *276*, 1221-1229, 1997.
- Carlson, C.A., H.W. Ducklow, and A.F. Michaels, Annual flux of dissolved organic carbon from the euphotic zone in the northwest Sargasso Sea, *Nature*, *371*, 405-408, 1994.
- Chisholm, S.W., Phytoplankton size, in *Primary Productivity and Biogeochemical Cycles in the Sea*, edited by P.G. Falkowski and A.D. Woodhead, pp. 213-237, Plenum, New York, 1992.
- Coale, K.H., et al., A massive phytoplankton bloom induced by an ecosystem-scale iron fertilization experiment in the equatorial Pacific Ocean, *Nature*, *383*, 495-501, 1996.
- Conkright, M.E., S. Levitus, and T.P. Boyer, *World Ocean Atlas 1994 Volume 1: Nutrients*, NOAA Atlas NESDIS 1, 150p., Washington D.C., 1994.
- Denman, K., E. Hofmann, and H. Marchant, Marine biotic responses to environmental change and feedbacks to climate, in *Climate Change 1995, IPCC*, edited by J.T. Houghton, et al., pp. 487-516, Cambridge Univ. Press, New York, 1996.
- Dickey, T., et al., Initial results from the Bermuda testbed mooring program, *Deep Sea Res., Part I*, *45*, 771-794, 1998.
- Doney, S.C., A synoptic atmospheric surface forcing data set and physical upper ocean model for the U.S. JGOFS Bermuda Atlantic Time-Series Study (BATS) site, *J. Geophys. Res.*, *101*, 25,615-25,634, 1996.
- Doney, S.C., D.M. Glover, and R.G. Najjar, A new coupled, one-dimensional biological-physical model for the upper ocean: Applications to the JGOFS Bermuda Atlantic Time Series (BATS) site, *Deep Sea Res., Part II*, *43*, 591-624, 1996.
- Druffel, E.R.M., P.M. Williams, and J.E. Bauer, Cycling of Dissolved and Particulate Organic Matter in the Open Ocean, *J. Geophys. Res.*, *97*, 15,639-15,659, 1992.
- Duce, R.A., and N.W. Tindale, Atmospheric transport of iron and its deposition in the ocean, *Limnol. Oceanogr.*, *36*, 1715-1726, 1991.
- Dugdale, R.C., and F.P. Wilkerson, Silicate regulation of new production in the equatorial Pacific upwelling, *Nature*, *391*, 270-273, 1998.
- Eglinton, T.I., B.C. Benitez-Nelson, A. Pearson, A.P. McNichol, J.E. Bauer, and E.R.M. Druffel, Variability in radiocarbon ages of individual organic compounds from marine sediments, *Science*, *277*, 796-799, 1997.
- England, M.H., Using chlorofluorocarbons to assess ocean climate models, *Geophys. Res. Lett.*, *22*, 3051-3054, 1995.
- Evans, G.T., and V.C. Garçon (Eds.), One-dimensional models of water column biogeochemistry, *Rep. 23/97*, 85pp., Joint Global Ocean Flux Study, Bergen, Norway, 1997.
- Falkowski, P.G., P.E. Biscaye, and C. Sancetta, The lateral flux of biogenic particles from the eastern North American continental margin to the North Atlantic Ocean, *Deep Sea Res., Part II*, *41*, 583-601, 1994.
- Fasham, M.J.R., Variations in the seasonal cycle of biological production in subarctic oceans: A model sensitivity analysis, *Deep Sea Res., Part I*, *42*, 1111-1149, 1995.
- Fasham, M.J.R., and G.T. Evans, The use of optimisation techniques to model marine ecosystem dynamics at the JGOFS station at 47°N and 20°W, *Philos. Trans. R. Soc. London, Series B*, *B348*, 206-209, 1995.
- Fasham, M.J.R., H.W. Ducklow, and S.M. McKelvie, A nitrogen-based model of plankton dynamics in the oceanic mixed layer, *J. Mar. Res.*, *48*, 591-639, 1990.
- Fogarty, M.J., and S.A. Murawski, Large-scale disturbance and the structure of marine systems: fishery impacts on Georges Bank, *Ecol. Appl.*, *8 Supp.*, S6-S22, 1998.
- Francis, R.C., and S.R. Hare, Decadal-scale regime shifts in the large marine ecosystems of the North-east Pacific: a case for historical science, *Fish. Oceanogr.*, *3*, 279-291, 1994.
- Friederich, G.E., P.G. Brewer, R. Herlien, and F.P. Chavez, Measurement of sea surface partial pressure of CO₂ from a moored bouy, *Deep Sea Res., Part I*, *42*, 1175-1186, 1995.
- Gent, P.R., and J.C. McWilliams, Isopycnal mixing in ocean circulation models, *J. Phys. Oceanogr.*, *20*, 150-155, 1990.

- Giering, R. and T. Kaminski, Recipes for adjoint code construction. *Trans. Math. Software*, *24*, 437–474, 1998.
- Glover, D.M., and S.C. Doney, Seasonal global mixed layer PZND model, *EOS Trans. AGU*, *76* (3), Ocean Sci. Meet. Supp., 168, 1996.
- Goyet, C., R. Healy, S.J. McCue, and D.M. Glover, Interpolation of TCO₂ data on a 1° × 1° grid throughout the water column below 500 m depth in the Atlantic Ocean, *Deep Sea Res., Part I*, *44*, 1945–1955, 1997.
- Gruber, N., J.L. Sarmiento, and T.F. Stocker, An improved method for detecting anthropogenic CO₂ in the oceans, *Global Biogeochem. Cycles*, *10*, 809–837, 1996.
- Haidvogel, D.B., E. Curchitser, M. Iskandarani, R. Hughes and M. Taylor, Global modeling of the ocean and atmosphere using the spectral element method. *Atmos. Ocean*, *35*, 505–531, 1997.
- Hansell, D.A., and C.A. Carlson, Net community production of dissolved organic carbon, *Global Biogeochem. Cycles*, *12*, 443–453, 1998.
- Harrison, D.E., Vertical velocity variability in the tropical Pacific: A circulation model perspective for JGOFS, *Deep Sea Res., Part II*, *43*, 687–705, 1996.
- Holfort, J., K.M. Johnson, B. Schneider, G. Siedler, and D.W.R. Wallace, Meridional transport of dissolved inorganic carbon in the South Atlantic Ocean, *Global Biogeochem. Cycles*, *12*, 479–499, 1998.
- Holligan, P.M., et al., A biogeochemical study of the coccolithophore, *Emiliania huxleyi*, in the North Atlantic, *Global Biogeochem. Cycles*, *7*, 879–900, 1993.
- Hurtt, G.C., and R.A. Armstrong, A pelagic ecosystem model calibrated with BATS data, *Deep Sea Res., Part II*, *43*, 653–683, 1996.
- Ishizaka, J., Coupling of Coastal Zone Color Scanner data to a physical-biological model of the Southeastern U.S. continental shelf ecosystem, 3, nutrient and phytoplankton fluxes and CZCS data assimilation, *J. Geophys. Res.*, *95*, 20201–20212, 1990.
- Johnson, K.S., R.M. Gordon, and K.H. Coale, What controls dissolved iron concentrations in the world ocean?, *Mar. Chem.*, *57*, 137–161, 1997.
- Karl, D.M., A sea of change: Biogeochemical variability in the North Pacific subtropical gyre, *Ecosystems*, *2*, 1–37, 1999.
- Karl, D.M., R. Letelier, D. Hebel, L. Tupas, J. Dore, J. Christian, and C. Winn, Ecosystem changes in the North Pacific subtropical gyre attributed to the 1991–1992 El Niño, *Nature*, *373*, 230–234, 1995.
- Karl, D., R. Letelier, L. Tupas, J. Dore, J. Christian, and D. Hebel, The role of nitrogen fixation in biogeochemical cycling in the subtropical North Pacific Ocean, *Nature*, *388*, 533–538, 1997.
- Keeling, R.F., and T.-H. Peng, Transport of heat, CO₂ and O₂ by the Atlantic's thermohaline circulation, *Philos. Trans. R. Soc., Ser. B*, *348*, 133–142, 1995.
- Lampitt, R.S., and A.M. Anita, Particle flux in deep seas: Regional characteristics and temporal variability, *Deep Sea Res., Part I*, *44*, 1377–1403, 1997.
- Landry, M.R., et al., Iron and grazing constraints on primary production in the central equatorial Pacific: An Eq-Pac synthesis, *Limnol. Oceanogr.*, *42*, 405–418, 1997.
- Large, W.G., J.C. McWilliams, and S.C. Doney, Oceanic vertical mixing: A review and a model with a nonlocal boundary layer parameterization, *Rev. Geophys.*, *32*, 363–403, 1994.
- Lee, K., R. Wanninkhof, T. Takahashi, S.C. Doney, and R.A. Feely, Low interannual variability in recent oceanic uptake of atmospheric carbon dioxide, *Nature*, *396*, 155–159, 1998.
- Lee-Taylor, J.M., S.C. Doney, G. Brasseur, and J.-F. Muller, A global three-dimensional atmosphere-ocean model of methyl bromide distributions, *J. Geophys. Res.*, *103*, 16,039–16,059, 1998.
- Longhurst, A., Seasonal cycles of pelagic production and consumption, *Prog. Oceanogr.*, *36*, 77–167, 1995.
- Martin, J.H., and S.E. Fitzwater, Iron deficiency limits phytoplankton growth in the north-east Pacific Subarctic, *Nature*, *331*, 341–343, 1988.
- Martin, J.H., G.A. Knauer, D.M. Karl and W.W. Broenkow, VERTEX: carbon cycling in the northeast Pacific, *Deep Sea Res., Part A*, *34*, 267–285, 1987.
- Matear, R.J., Parameter optimization and analysis of ecosystem models using simulated annealing: A case study at Station P, *J. Mar. Res.*, *53*, 571–607, 1995.
- Matear, R.J., and G. Holloway, Modeling the inorganic phosphorus cycle of the North Pacific using an adjoint data assimilation model to assess the role of dissolved organic phosphorus. *Global Biogeochem. Cycle*, *9*, 101–119, 1995.
- McClain, C.R., M.L. Cleave, G.C. Feldman, W.W. Gregg, S.B. Hooker, and N. Kuring, Science quality SeaWiFS data for global biosphere research, *Sea Technol.*, *39*, 10–14, 1998.
- McGillicuddy, D.J., Jr. and A.R. Robinson, Eddy-induced nutrient supply and new production, *Deep Sea Res., Part I*, *44*, 1427–1450, 1997.
- McGillicuddy, D.J., Jr., A.R. Robinson, D.A. Siegel, H.W. Jannasch, R. Johnson, T.D. Dickey, J. McNeil, A.F. Michaels, and A.H. Knap, Influence of mesoscale eddies on new production in the Sargasso Sea, *Nature*, *394*, 263–266, 1998.
- McGowan, J.A., D.R. Cayan, and L.M. Dorman, Climate-ocean variability and ecosystem response in the Northeast Pacific, *Science*, *281*, 210–217, 1998.
- McWilliams, J.C., Modeling the oceanic general circulation, *Annu. Rev. Fluid Mech.*, *28*, 215–248, 1996.
- Murnane, R.J., J.K. Cochran, and J.L. Sarmiento, Estimates of particle- and thorium-cycling rates in the northwest Atlantic Ocean, *J. Geophys. Res.*, *99*, 3373–3392, 1994.
- Najjar, R.G., J.L. Sarmiento, and J.R. Toggweiler, Downward transport and fate of organic matter in the ocean: Simulations with a general circulation model, *Global Biogeochem. Cycles*, *6*, 45–76, 1992.
- National Research Council, *Sustaining Marine Fisheries*, 184pp., National Academy Press, Washington D.C., 1999.
- Nixon, S.W., Coastal eutrophication: A definition, social, causes, and future concerns, *Ophelia Supp.*, *41*, 199–220, 1995.
- Oschlies, A., and V. Garçon, Eddy-induced enhancement of primary production in a model of the North Atlantic Ocean, *Nature*, *394*, 266–269, 1998.
- Packard, T.T., M. Denis, M. Rodier, and P. Garfield, Deep-ocean metabolic CO₂ production: Calculations from ETS activity, *Deep Sea Res., Part A*, *35*, 371–382, 1988.
- Pærl, H.W., Coastal eutrophication and harmful algal blooms: Importance of atmospheric deposition and groundwater as “new” nitrogen and other nutrient sources, *Limnol. Oceanogr.*, *42*, 1154–1165, 1997.
- Reid, P.C., M. Edwards, H.G. Hunt, and A.J. Warner, Phytoplankton change in the North Atlantic, *Nature*, *391*, 546, 1998.
- Robinson, A.R., Physical processes, field estimation and an

- approach to interdisciplinary ocean modeling, *Earth Sci. Rev.*, *40*, 3–54, 1996.
- Sambrotto, R.N., G. Savidge, C. Robinson, P. Boyd, T. Takahashi, D.M. Karl, C. Langdon, D. Chipman, J. Marra, and L. Codespoti, Elevated consumption of carbon relative to nitrogen in the surface ocean, *Nature*, *363*, 248–250, 1993.
- Sarmiento, J.L., R.D. Slater, and M.J.R. Fasham, A seasonal three-dimensional ecosystem model of nitrogen cycling in the North Atlantic euphotic zone, *Global Biogeochem. Cycles*, *7*, 417–450, 1993.
- Schlitzer, R., Applying the adjoint method for global biogeochemical modeling, in *Inverse Methods in Global Biogeochemical Cycles*, edited by P. Kasibhatla et al., AGU Geophys. Monograph Series, *in press*, 1999.
- Six, K.D., and E. Maier-Reimer, Effects of plankton dynamics on seasonal carbon fluxes in an ocean general circulation model, *Global Biogeochem. Cycles*, *10*, 559–583, 1996.
- Smith, R.D., M.E. Maltrud, F.O. Bryan, and M.W. Hecht, Numerical simulation of the North Atlantic at $1/10^\circ$, *J. Phys. Oceanogr.*, *in press*, 1999.
- Smith, S.V., and J.T. Hollibaugh, Coastal metabolism and the oceanic organic carbon balance, *Rev. Geophys.*, *31*, 75–89, 1993.
- Spall, M.A., and W.R. Holland, A nested primitive equation model for oceanic applications, *J. Phys. Oceanogr.*, *21*, 205–220, 1991.
- Spitz, Y.H., J.R. Moisan, M.R. Abbott, and J.G. Richman, Data assimilation and a pelagic ecosystem model: Parameterization using time series observations, *J. Mar. Syst.*, *16*, 51–68, 1998.
- Takahashi, T., R.A. Feely, R.F. Weiss, R.H. Wanninkhof, D.W. Chipman, S.C. Sutherland, and T.T. Takahashi, Global air-sea flux of CO₂: An estimate based on measurements of sea-air pCO₂ difference, *Proc. Natl. Acad. Sci., U.S.A.*, *94*, 8929–8299, 1997.
- U.S. Joint Global Ocean Flux Study (U.S. JGOFS), Report of the U.S. JGOFS Workshop on Modeling and Data Assimilation, Planning Report Number 14, 28pp., U.S. JGOFS Planning Office, Woods Hole, MA, 1992.
- Venrick, E.L., J.A. McGowan, D.R. Cayan, and T.L. Hayward, Climate and chlorophyll a: Longterm trends in the central North Pacific Ocean, *Science*, *238*, 70–72, 1987.
- Villareal, T.A., S. Woods, J.K. Moore, and K. Culver-Rymsza, Vertical migration of Rhizosolenia mats and their significance to NO₃ fluxes in the central North Pacific, *J. Plankton Res.*, *18*, 1103–1121, 1996.
- Wakeham, S.G., C. Lee, J.I. Hedges, P.J. Hernes, and M.L. Peterson, Molecular indicators of diagenic status in marine organic matter, *Geochim. Cosmochim. Acta*, *61*, 5363–5369, 1997.
- Wallace, D.W.R., Monitoring global ocean carbon inventories, 54pp. Ocean Obs. Syst. Dev. Panel, Texas A&M Univ., College Station, 1995.
- Walsh, J.J., Importance of continental margins in the marine biogeochemical cycling of carbon and nitrogen, *Nature*, *350*, 53–55, 1991.
- Wanninkhof, R., Relationship between wind speed and gas exchange over the ocean, *J. Geophys. Res.*, *97*, 7373–7382, 1992.
- Yoder, J.A., S.G. Ackleson, R.T. Barber, P. Flament, and W.M. Balch, A line in the sea, *Nature*, *371*, 689–692, 1994.
-
- S. C. Doney, Climate and Global Dynamics, National Center for Atmospheric Research, Boulder, CO 80027. (doney@ncar.ucar.edu)
- (Received September 15, 1998; revised June 14, 1999; accepted June 21, 1999.)